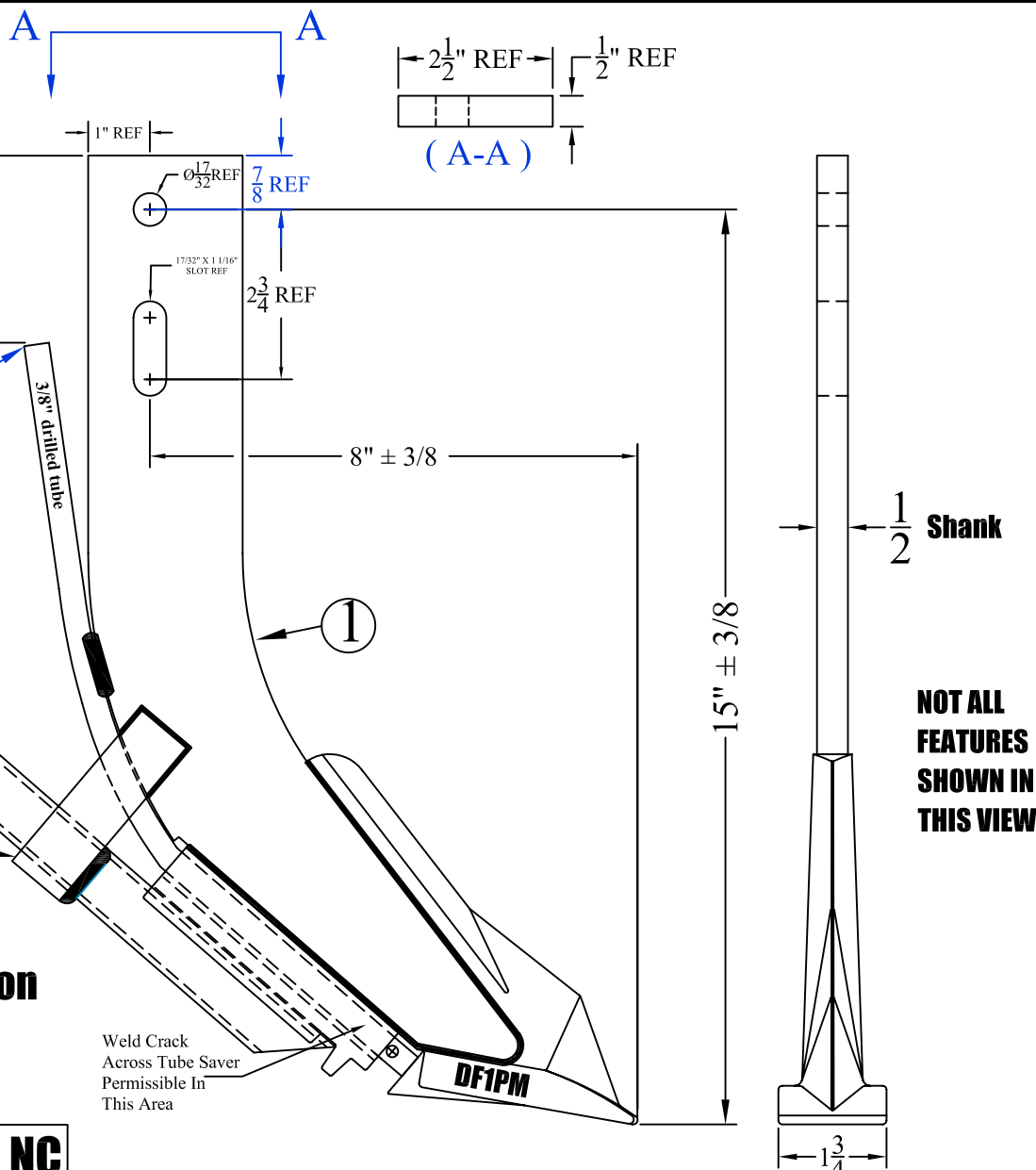


| ITEM # | QUAN. | PART # | DESCRIPTION |
|--------|-------|------------|---|
| 1 | 1 | DF-1PMDATS | KNIFE,DF-PM,SUBASSEMBLY w/DA TUBE SAVER |
| 2 | 1 | K4T1/2DAS | KNIFE STRAP, 1/8 x 1 x 6" |
| 3 | 1 | K2TBDA3/4 | KNIFE TUBE, K-2T, 3/4" DA |



DRAWING FOR MARKETING PURPOSES
(R) Designation for REDACTED DRAWING
To remove proprietary manufacturing information

(R)

DF-1PM/3/4DA NC

< KC > Key Characteristic

Weld Crack
 Across Tube Saver
 Permissible In
 This Area

**NOT ALL
 FEATURES
 SHOWN IN
 THIS VIEW**

| REV. | BY | DATE | DESCRIPTION |
|------|----|------|-------------|
| - | - | - | - |
| - | - | - | - |
| - | - | - | - |
| - | - | - | - |

**TOLERANCE UNLESS
 OTHERWISE NOTED**
 0/0 +/- 1/16
 0.00 +/- .020
 0.000 +/- .010
 0.0000 +/- .001
 ANGLE +/- 2

SHIELD
 AGRICULTURAL EQUIPMENT

DRAWN BY: SHORES **DATE: 4/15/10**
CHECKED BY: - **DATE: -**

| | | | |
|--|-----------------------------|---------------------------------------|-------------------|
| DESCRIPTION KNIFE, DF-1PM, 3/8" drilled x 3/4" Vapor tubes | MATERIAL WELDMENT | PART NO. DF-1PM/3/4DA (R) | REV. NC |
|--|-----------------------------|---------------------------------------|-------------------|